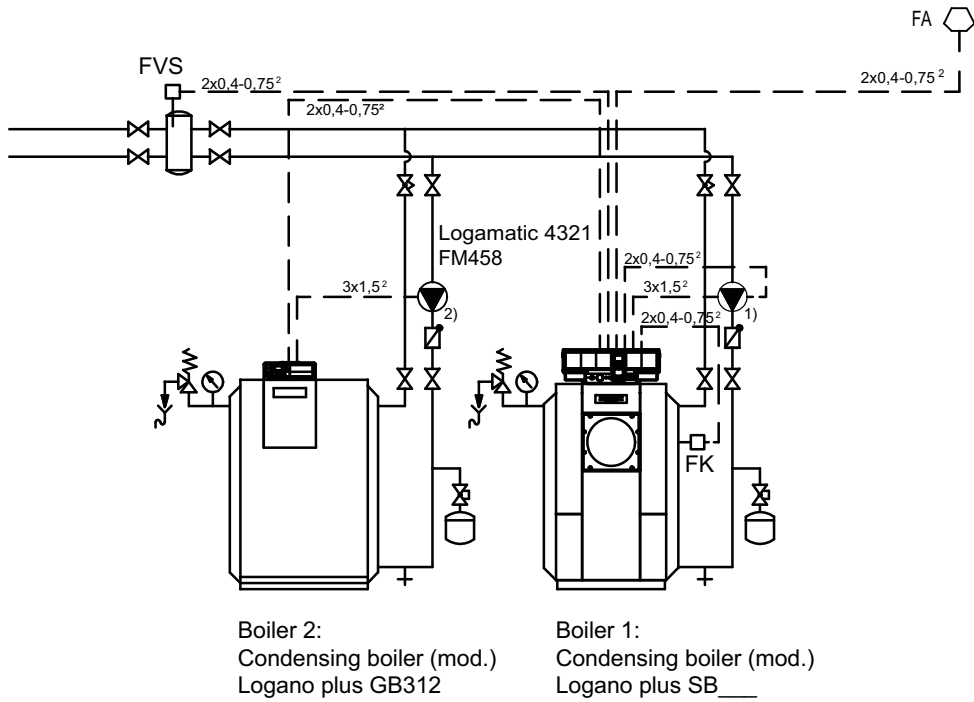
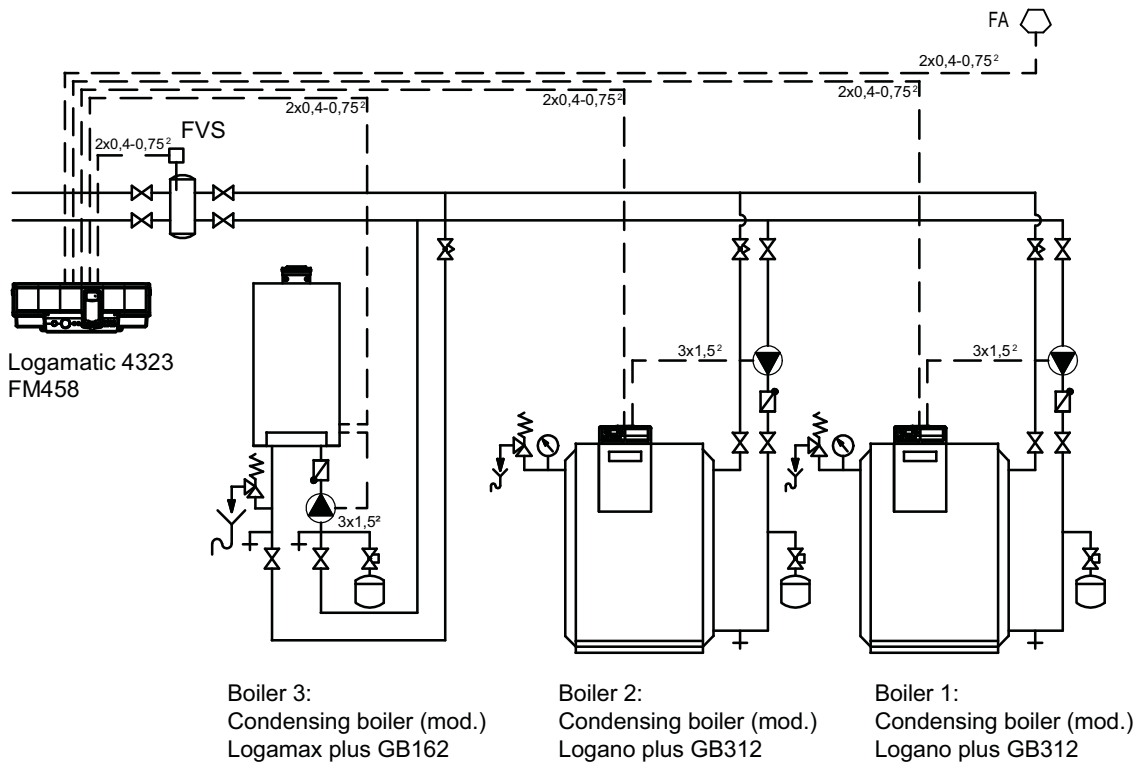


Example 1:
Floorstanding two-boiler system, 1 x boiler type: 4000 series boiler, 1 x EMS (GB312)

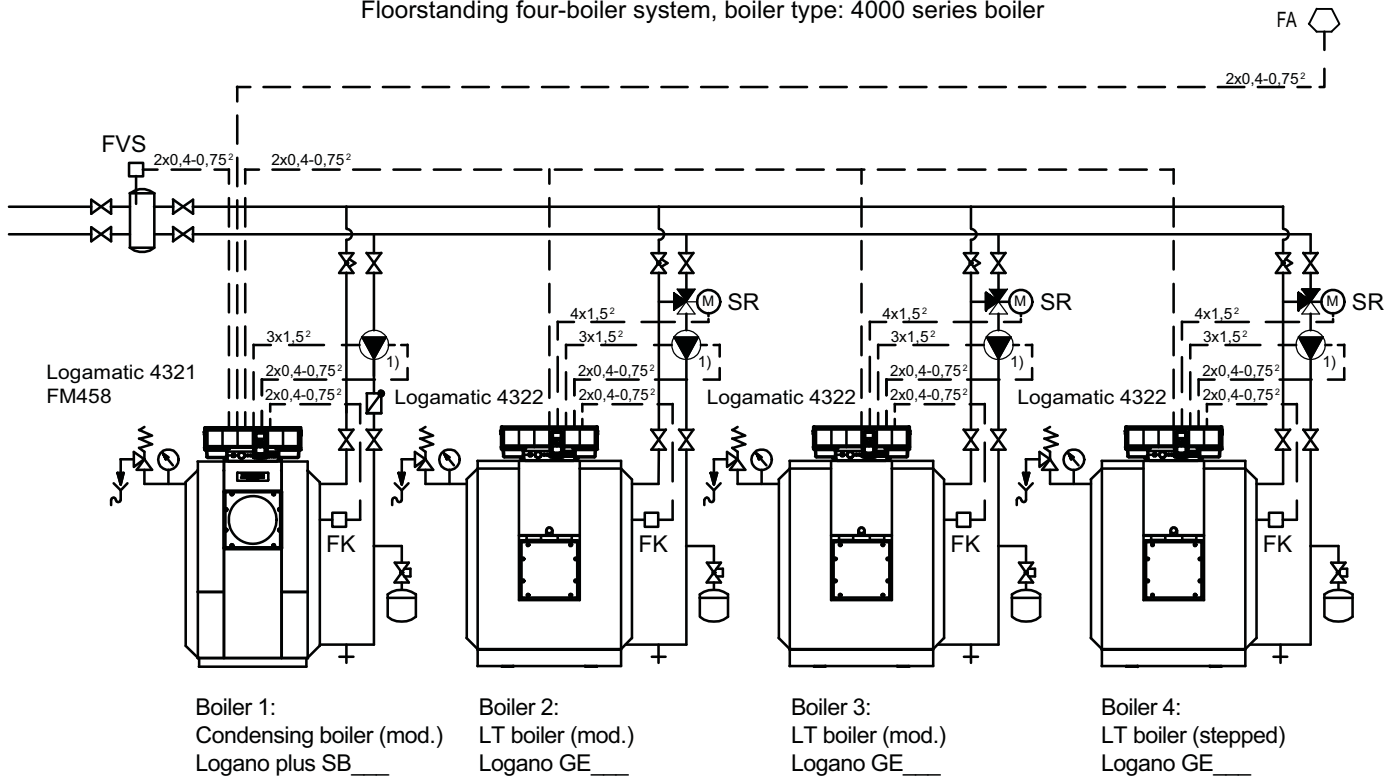


- 1) Boiler circuit pump control via 230 V (terminal PK)
Optional modulating operation via 0-10 V (terminal UPu)
- 2) Boiler circuit pump connection GB312 to MC10 (not via Logamatic 4321)

Example 2:
Three-boiler system EMS, boiler type: 2 x EMS (GB312), 1 x EMS (GB162)

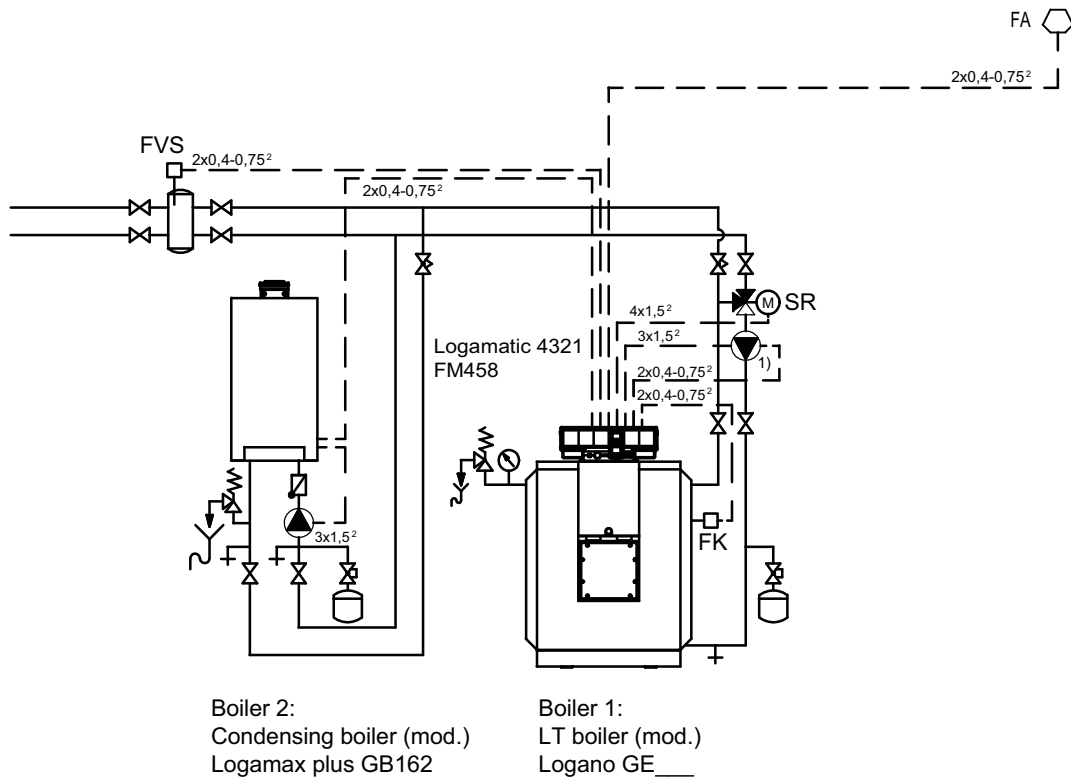


Example 3:
Floorstanding four-boiler system, boiler type: 4000 series boiler



1) Boiler circuit pump control via 230 V (terminal PK)
Optional modulating operation via 0-10 V (terminal UPu)

Example 4:
Two-boiler system, 1 floorstanding boiler (4000 series boiler), 1 wall mounted boiler (EMS)



1) Boiler circuit pump control via 230 V (terminal PK)
Optional modulating operation via 0-10 V (terminal UPu)